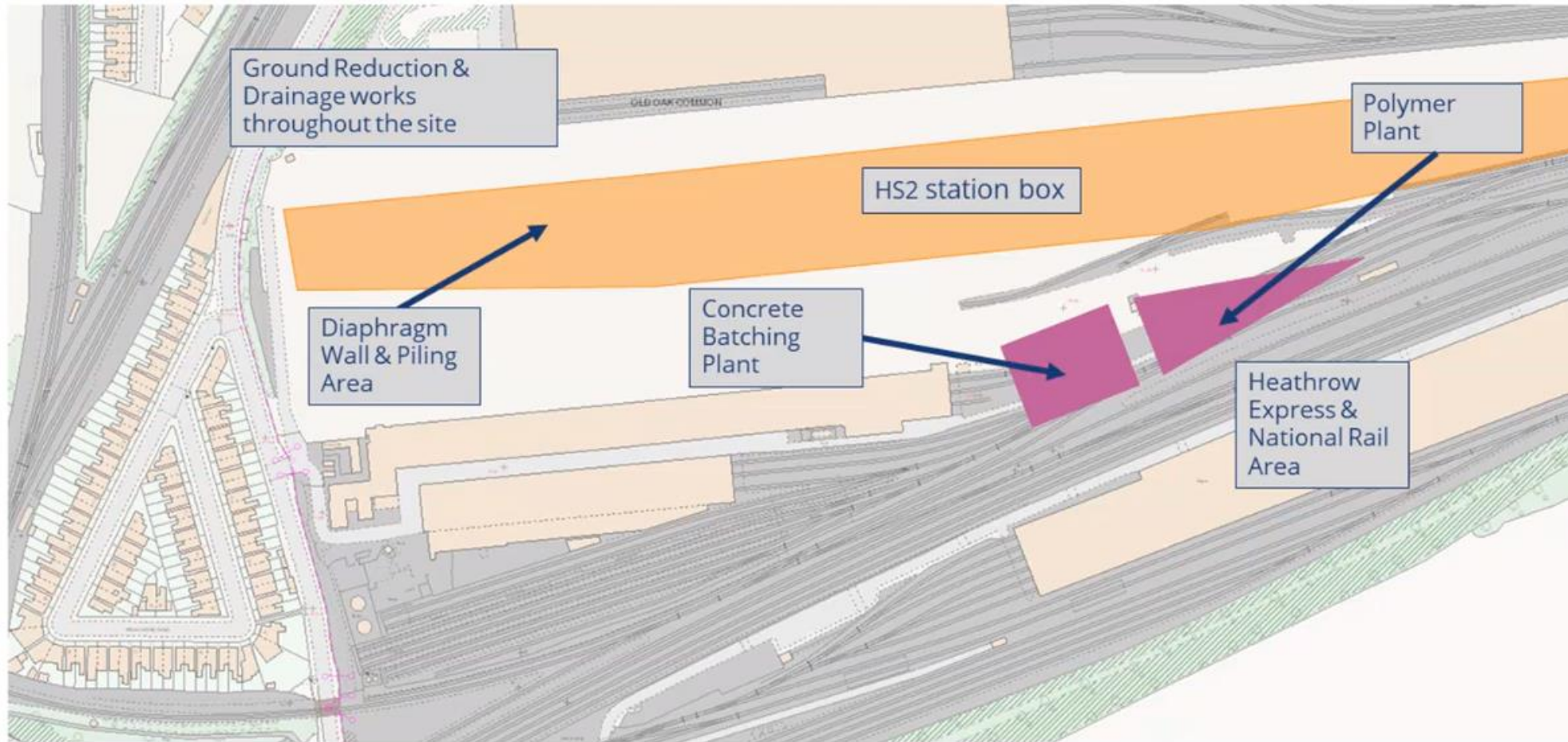





Report back from HS2 consultation

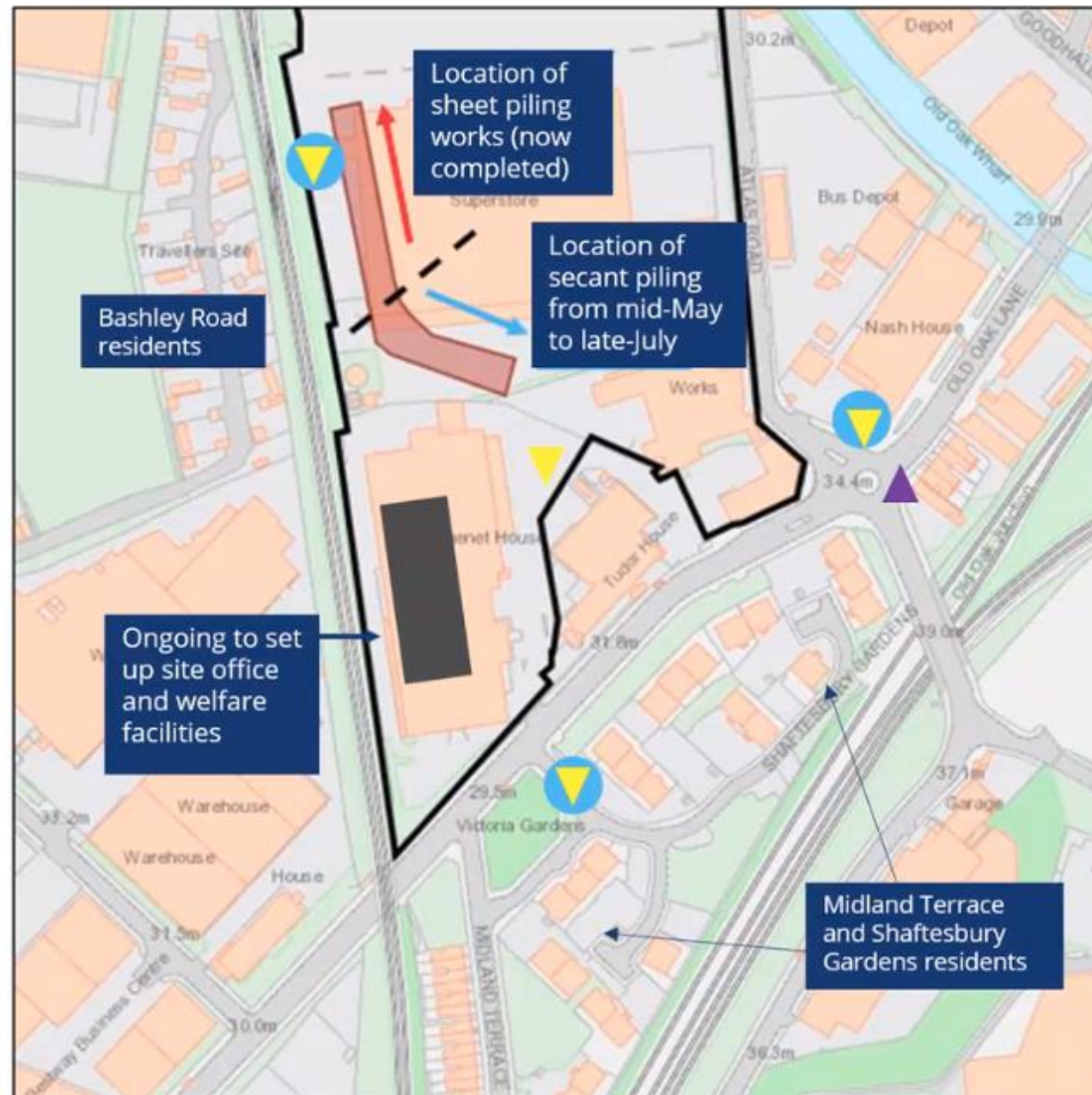
Old Oak Common Station Site



Monitoring our works - Atlas Road site (SCSJV)

We are continuing to monitor noise and dust during our works at this site. The approximate location of the monitors at this site are marked on the map to the right.

Monitor type	Monitor number	Location marked on map
Noise monitors	N032 N033 N060	
Dust monitors	AQ025 AQ026 AQ037 AQ039	
Diffusion Tube monitoring	HS2-000020BN5	



HS2 PROPOSALS

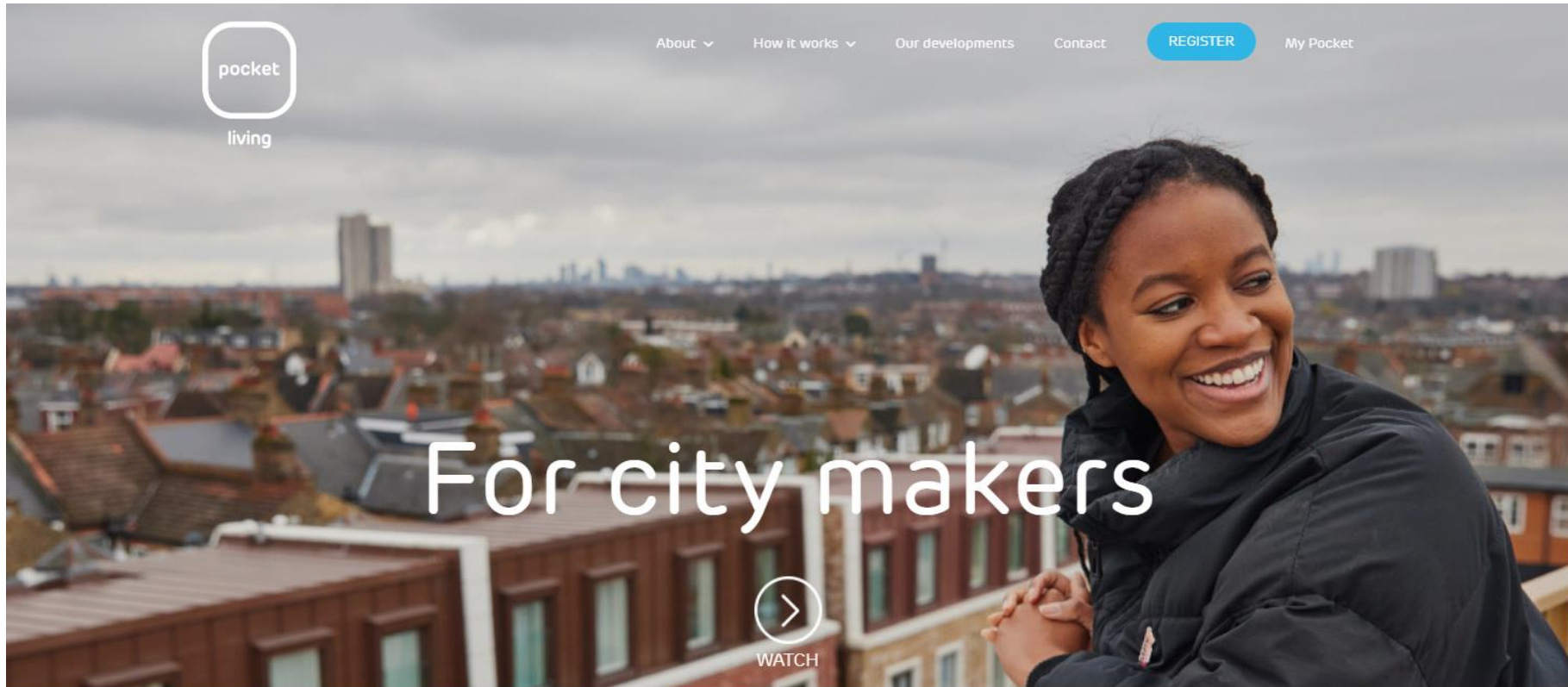
'Victoria Rd Crossover Box' site



Can we do better than this rubbish?



Pocket Living plans for Channel Gate



Pocket Living is working hard to get middle earning Londoners – we call them [city makers](#) – onto the property ladder.

We sell well-designed, affordable [homes](#) for at least 20% below market value to help first time buyers in London make the dream of owning a home in London a reality.

[Our story](#)

OPDC // Aspirations



GRID
architects



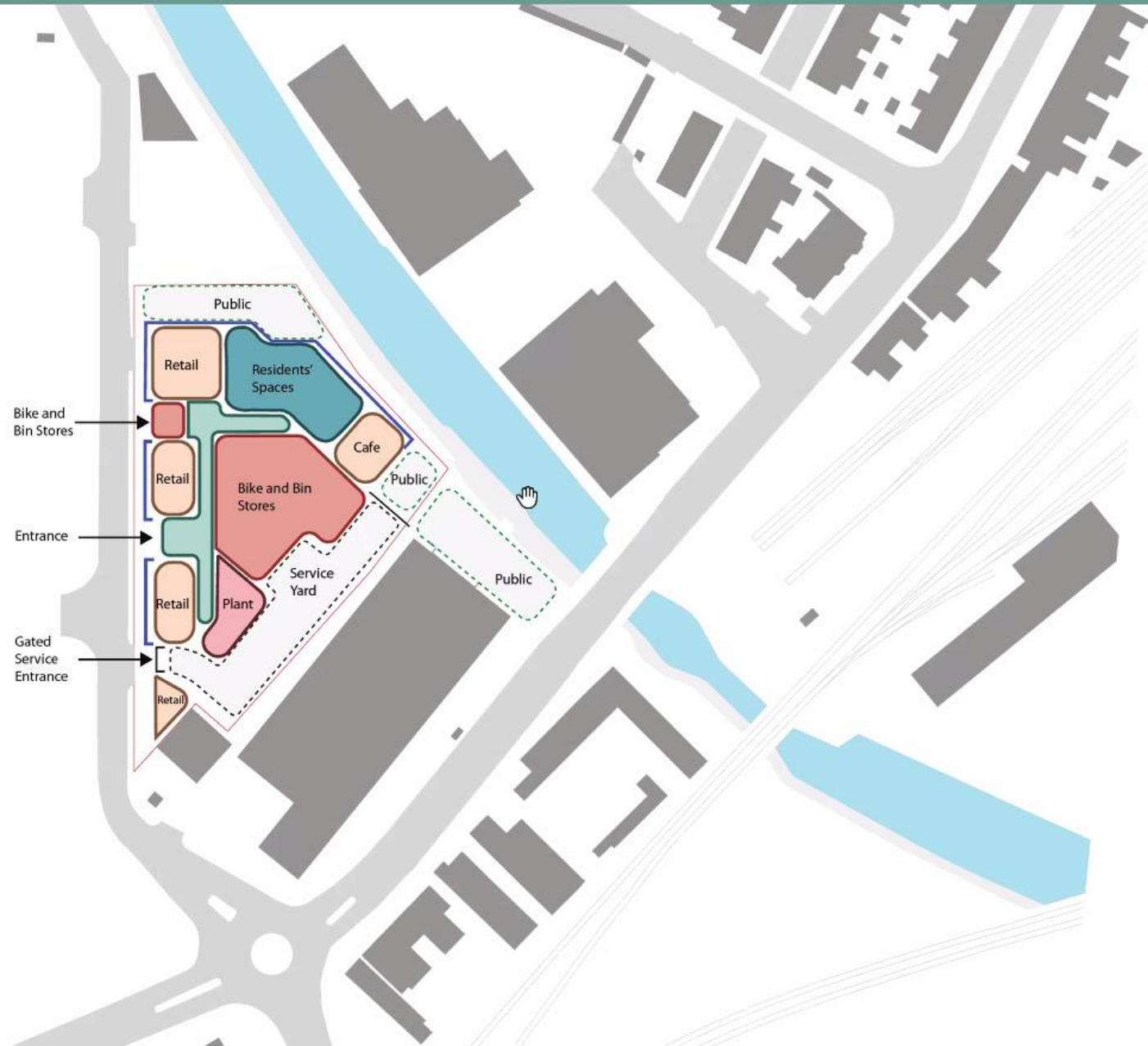
- Delivering circa 400 new high-quality homes for rent.
- Activating the canalside for the benefit of the whole community.
- Creating a variety of publicly accessible landscape areas and better access to the canal.
- Activating the ground floor with shop/cafe/restaurant spaces.
- Generating employment through construction and operational jobs.
- Promoting sustainable travel by providing ample cycle storage and a dedicated cycle workshop.
- Supporting the delivery of the new Town Centre, working closely with OPDC.



Conceptual Ground Floor Plan



GRID
architects



Build to Rent scheme rather than Pocket Living's usual product of 'discounted market sale'

8 storeys on the canal and perhaps 26 storey tower to match Oaklands.

Density of 700 housing units/hectare

Canalside improved

Shops, café, pharmacy.

Construction period 3.5 years from now.

One Portal Way



Any other business

Contact details for OONF

www.oldoakneighbourhoodforum.org

www.facebook.com/OldOakNeighbourhood

email address for the forum is oonforum@gmail.com