



# Old Oak Neighbourhood Forum and Grand Union Alliance

June 4<sup>th</sup> 2019

The Collective, Old Oak Lane

# Agenda for this evening

1. Welcome and notes of May 7<sup>th</sup> meeting
2. Current action on health and environmental issues arising from HS2 works and construction at Oaklands
3. Update on latest OPDC activities and governance issues
4. June 6<sup>th</sup> EIP hearing on the OPDC Draft Local Plan
5. Consultation on future of the Linford Christie Stadium
6. Harlesden Neighbourhood Plan – outcome of 30<sup>th</sup> May
7. Willesden Junction station – latest on redesign proposals
8. Any other business and/or new issues of local concern

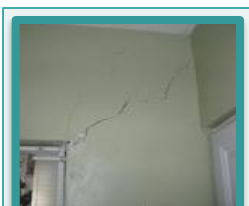
Just some of our HS2 issues: 7-10 more years of this ....



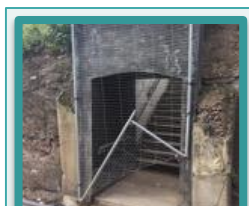
**AIR  
POLLUTION**



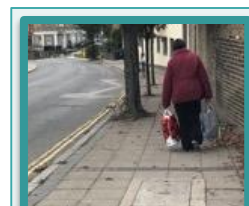
**NOISE**



**TREMORS**



**ISOLATION –  
THE STEPS**



**BUS STOP  
CLOSURES**



**COMMUNITY  
COHESION**



**BAD  
COMMUNITY  
ENGAGEMENT**



**WATER &  
SEWAGE**



**RATS AND FLIES**



**RETAINING  
WALL**



**WATER &  
SEWAGE**



**DETERIORATION**

## What actions are we taking

- Starting afresh with a new community engagement team
- Trying to hold HS2 to account for ignoring assurances from the Secretary of State
- Engaging our local officials: MPs, Councilors, London Assembly members
- Communicating with community members
- Focusing on monitoring
  - Noise
  - Air pollution
  - Seismic vibrations
- Reaching out to experts and advocates – particularly around the need for support with health and well-being
  - Director of Public Health
  - Camden advocacy groups
  - Kings College
  - UCL
  - Our own experts: GUA, OONF, individuals within the community

# Latest OPDC activities

in the making

**a new identity that celebrates community, arts, culture, business enterprise and early improvements in Old Oak and Park Royal.**

Great Place Arts and Culture Scheme

**Arts Council funded – grants for community projects, Artists in Residence scheme**

Early Activation

**Projects along canalside and at Willesden Junction.  
Details presented at OONF meeting in February**

**On planning activity, one application for 1,450sqm of industrial floorspace at the Westway Industrial Estate due to be decided by Planning Committee in June.**

**No news of public consultation sessions on OPDC 'masterplan' for Old Oak North,**

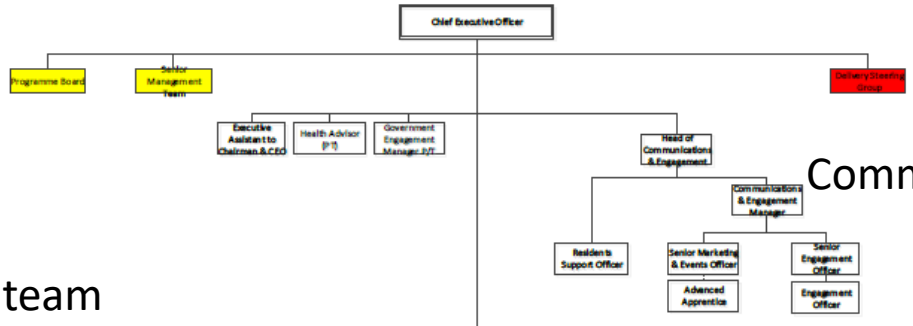
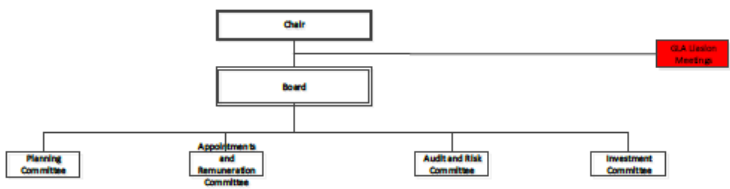
# OPDC governance arrangements

New 'protocol' adopted by OPDC Board 30 May to guide staff on how to keep separate the roles of OPDC as planning authority and 'delivery agent'

Recruitment of chief executive officer closed May 1<sup>st</sup>. Final Panel interviews were due May/June 2019 but OPDC now 'moving slowly' on dates.

No reply to request for review of OPDC decision to refuse Fol request from OONF for a copy of £250m HIF bid to Government in Sept 2018.

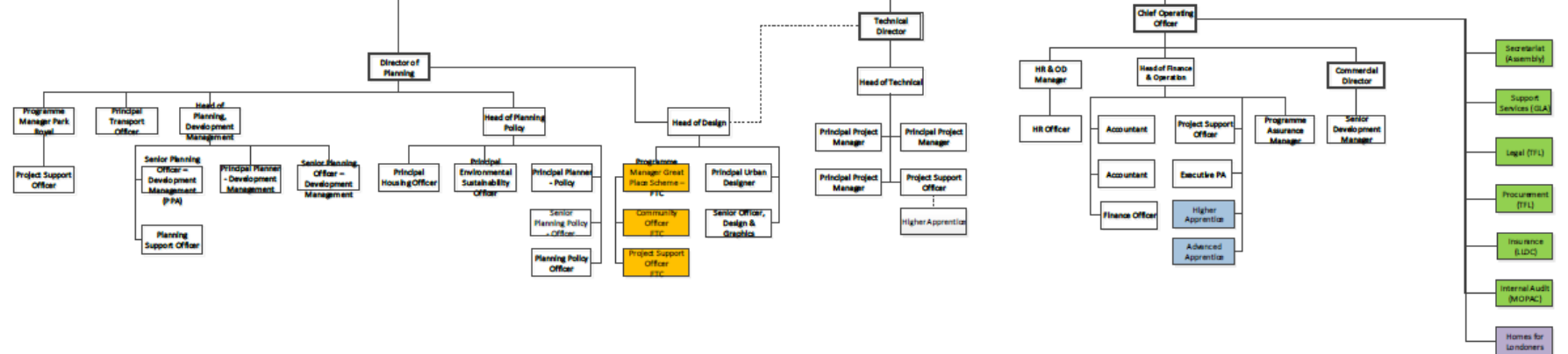
# OPDC structure chart



Planning team

Technical team

Finance/Operations



- Apprentices (Matrix Management)
- Fixed Term Contract
- Shared Services
- Partially Shared Services
- Internal Governance
- Subsidiary Governance

# Draft Local Plan – extra EIP session

Planning Inspector Paul Clark identified further information needed from OPDC

Did OPDC consider ‘reasonable alternatives’ when preparing Local Plan?

Cargiant say the Plan fails this test. Backed up by legal Opinion from David Elvin QC

OPDC have now produced contrary legal opinion from Paul Brown QC

OONF believes that there should have been alternative options to the 25,000 new homes target.



# Linford Christie consultation ends on 12<sup>th</sup> June





## A new community sports hub for Shepherds Bush, White City & East Acton

A major redevelopment involving QPR would:

- ✔ Stick to the existing footprint of Linford Christie Stadium so there is no encroachment on the green space of Wormwood Scrubs
- ✔ Provide new community sports facilities, such as proper changing rooms to replace the existing ones, with more activities for young people
- ✔ Include toilets and a café for people visiting the Scrubs
- ✔ See more non-matchday use of the stadium – for community and corporate events – so it becomes a genuine community asset and is not just used 25 days a year for football matches
- ✔ Create new jobs and opportunities for local people such as full time catering and hospitality roles
- ✔ Use the latest environmentally sustainable design so it fits in with its surroundings
- ✔ Keep QPR in the area for the long term

For more information, and to take part in the consultation, visit [www.qpr.co.uk/newstadium](http://www.qpr.co.uk/newstadium)

If you want QPR to stay in W12, choose 'Option 3 – major redevelopment'



To find out more information about QPR's vision for a new community stadium, please come to the **community drop-in at Loftus Road Stadium** on Wednesday 29th May between 12pm-2pm or 5pm-7pm. Entrance via Loftus Road.

Or e-mail the club on [SecureRFuture@qpr.co.uk](mailto:SecureRFuture@qpr.co.uk) to arrange something separately. The club wants to hear from as many local residents as possible.



# Do you want QPR to stay part of the local community?

- ✔ Voted best community club in London by the Football League
- ✔ Award-winning outreach programme helping vulnerable people young and old
- ✔ Active grassroots programme for local children
- ✔ Boosts local economy by £39m a year



## Then have your say on the future of the Linford Christie Stadium!

Summer 2019

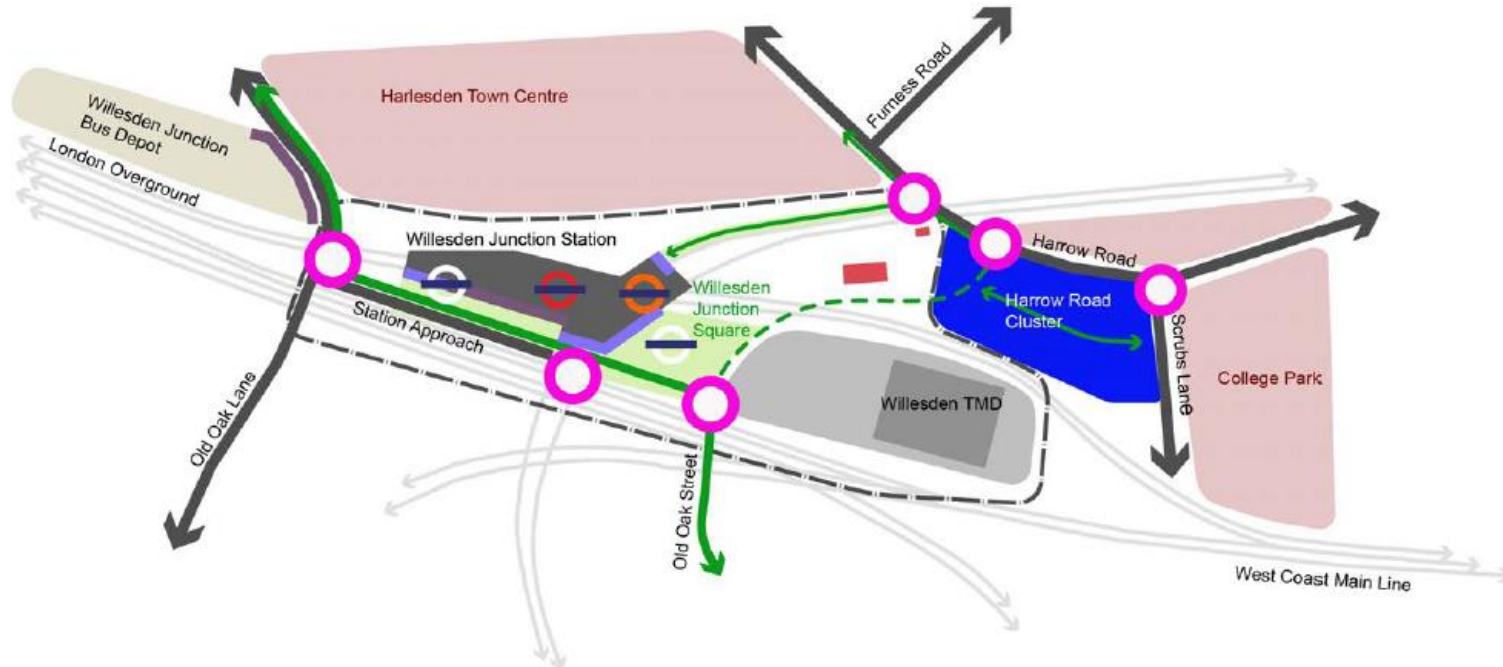


Local referendum on Harlesden Neighbourhood Plan held on May 30<sup>th</sup>.

Result was 90% yes vote on an 11% turnout (approx 1,300 residents voted).

# Willesden Junction station

Figure 4.44: P11 - Willesden Junction



- Clusters
- Place boundary
- Existing and enhanced key routes
- Old Oak Street walking and cycling route
- New or enhanced walking and cycling routes
- Future walking and cycling route (beyond plan period)
- Railway lines
- New or enhanced publicly accessible open space
- Rail Depot
- London Overground and Underground Station
- Existing residential neighbourhood
- Proposed Local Heritage Listing
- Strategic Industrial Location (SIL)
- Station entrance
- Active frontage
- New and Improved junction / bridge / underpass
- Transport interchange

# Any other business

Contact details for OONF

[www.oldoakneighbourhoodforum.org](http://www.oldoakneighbourhoodforum.org)

[www.facebook.com/OldOakNeighbourhood](http://www.facebook.com/OldOakNeighbourhood)

email address for the forum is

[oonforum@gmail.com](mailto:oonforum@gmail.com)